

JOV.19981204.0009

This accession number contains the color
images for the record with accession
number: MOV.19981204.0009

Index Map

- Proposed Potentially Acceptable Sites
- Candidate Areas
- Rock Bodies

- State Boundaries
- County Lines

Scale 1:1,000,000

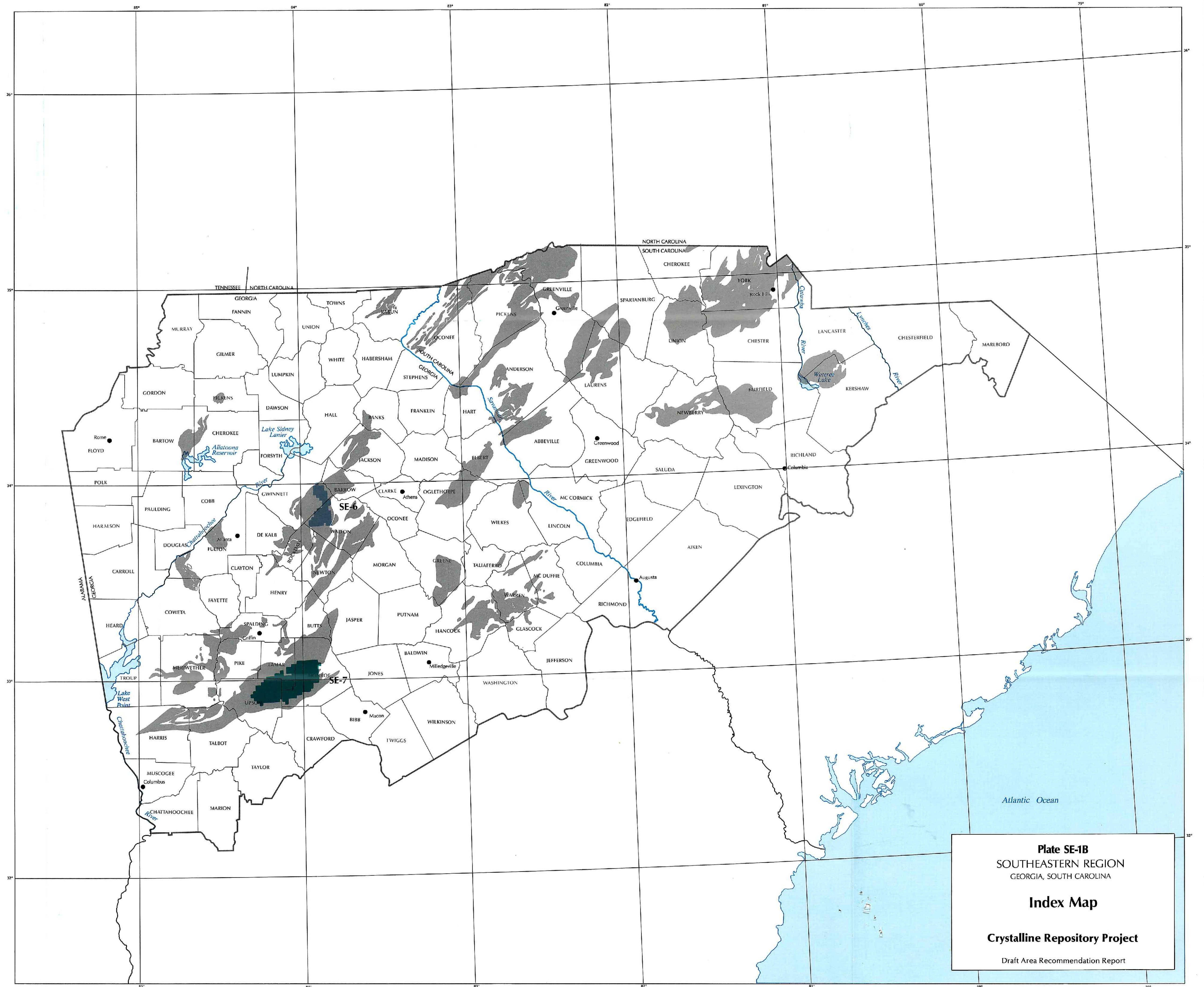
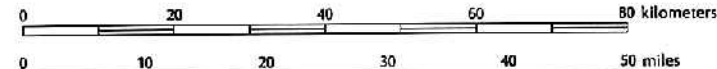


Plate SE-1B
SOUTHEASTERN REGION
GEORGIA, SOUTH CAROLINA

Index Map

Crystalline Repository Project
Draft Area Recommendation Report

Disqualified Areas Map

- Deep Mines and Quarries
- Population Density and Distribution
- Federal Protected Lands
- State Protected Lands
- Rock Bodies

State Boundaries
County Lines

Scale 1:1,000,000

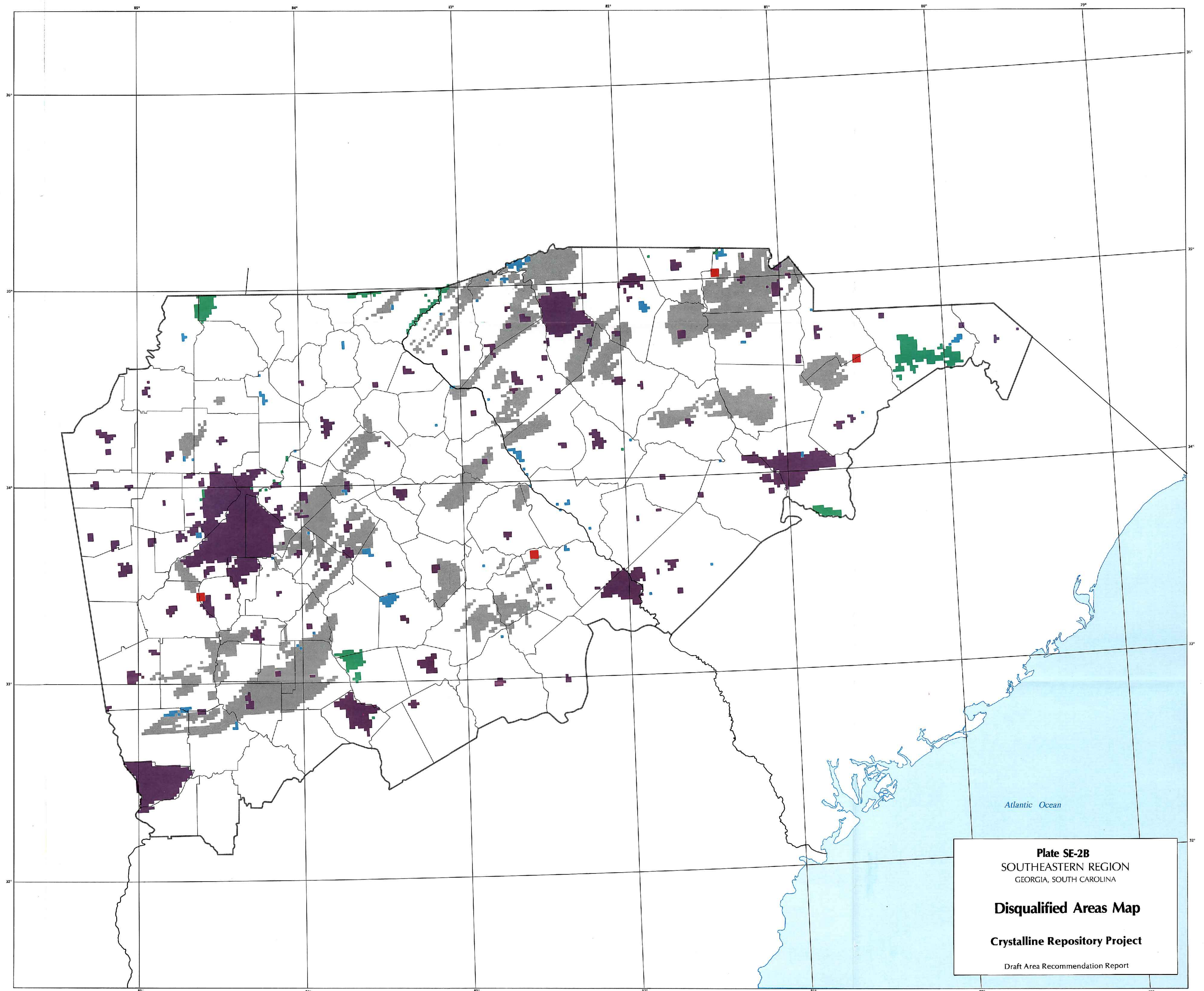
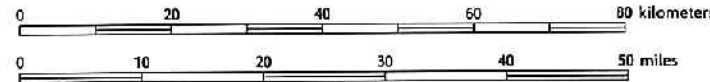
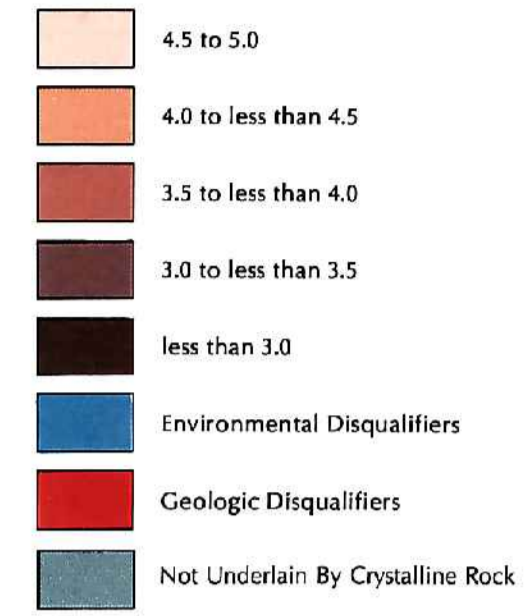


Plate SE-2B
SOUTHEASTERN REGION
GEORGIA, SOUTH CAROLINA
Disqualified Areas Map
Crystalline Repository Project
Draft Area Recommendation Report

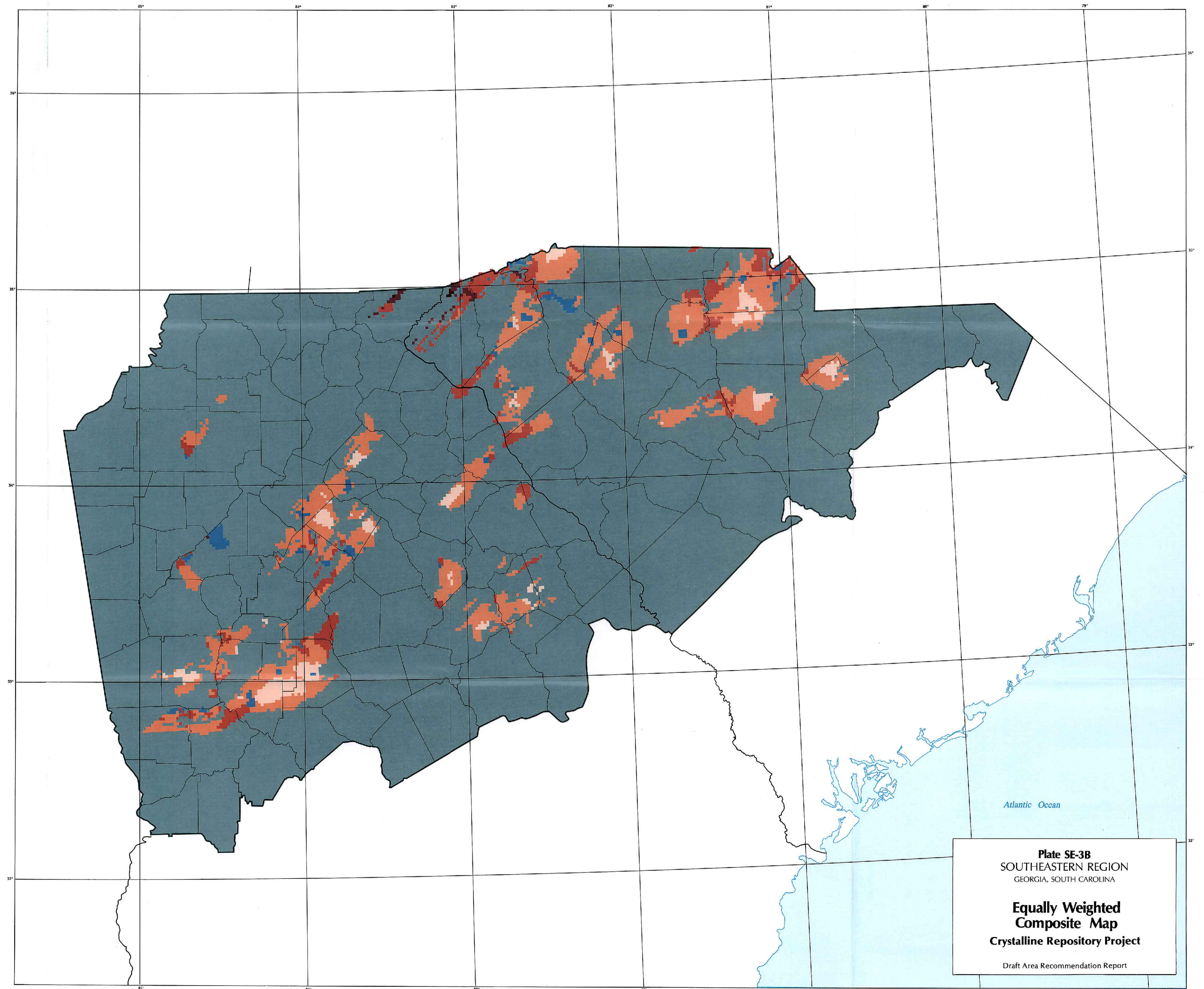
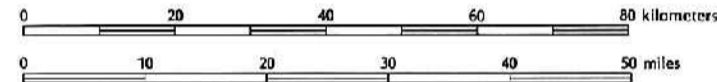
**Equally Weighted
Composite Map
Step 2 Variables**

Aggregate Favorability



State Boundaries
County Lines

Scale 1:1,000,000



Atlantic Ocean

Plate SE-3B
SOUTHEASTERN REGION
GEORGIA, SOUTH CAROLINA

**Equally Weighted
Composite Map**
Crystalline Repository Project

Draft Area Recommendation Report

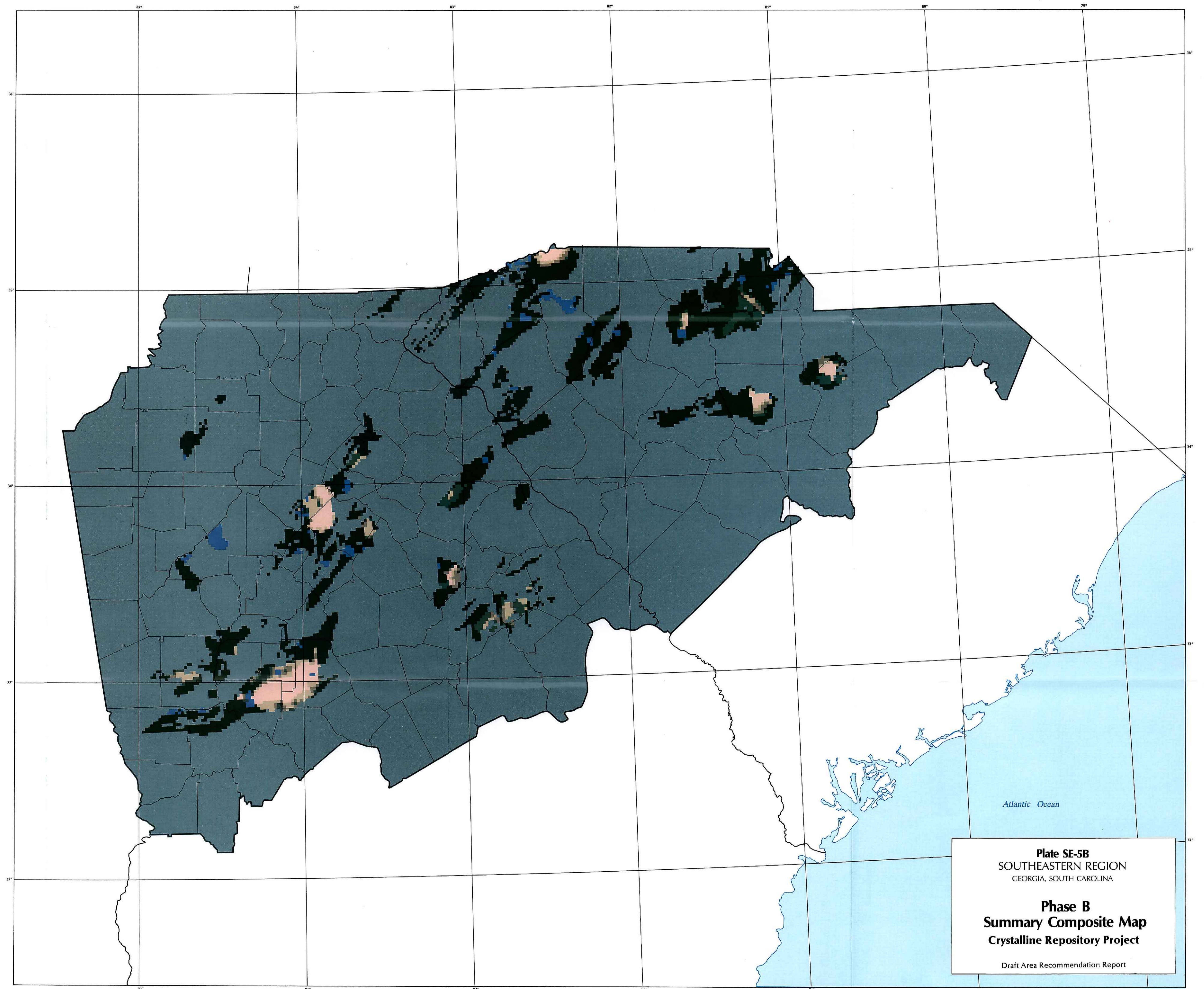
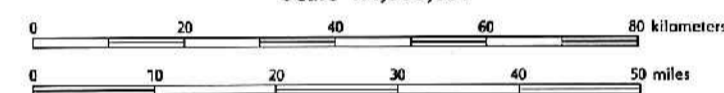
**Phase B
Summary Composite Map**

Frequency of Occurrence



State Boundaries
County Lines

Scale 1:1,000,000



Atlantic Ocean

Plate SE-5B
SOUTHEASTERN REGION
GEORGIA, SOUTH CAROLINA

Phase B
Summary Composite Map
Crystalline Repository Project

Draft Area Recommendation Report

- Interstate Highways
- U.S. Highways
- State Highways
- - - Mainline Railroads
- - - Branchline Railroads
- State Boundaries

Scale 1:1,000,000

0 10 20 30 40 50 Miles

0 20 40 60 80 Kilometers

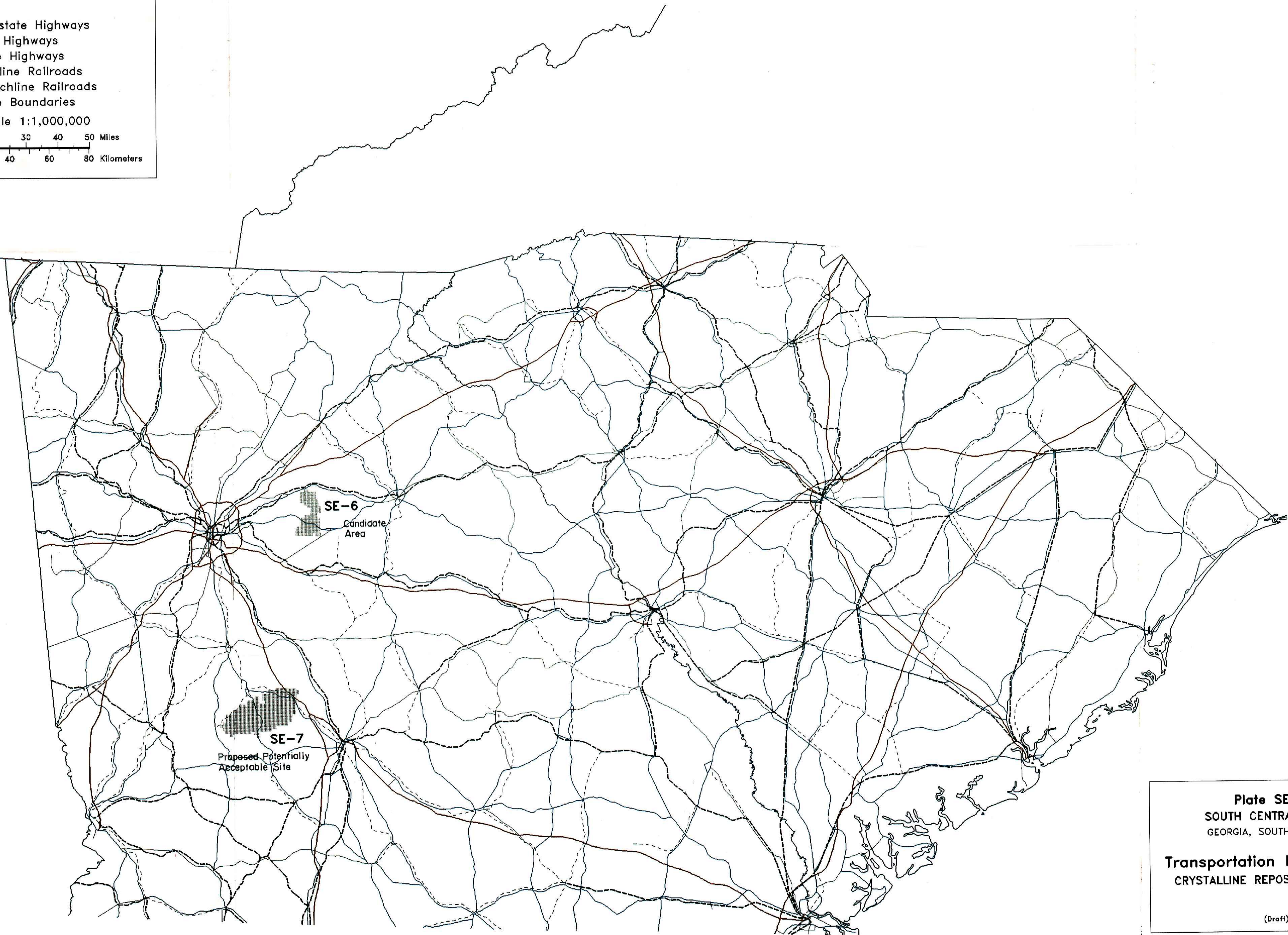


Plate SE-6B
 SOUTH CENTRAL REGION
 GEORGIA, SOUTH CAROLINA

Transportation Network Map
 CRYSTALLINE REPOSITORY PROJECT

(Draft)