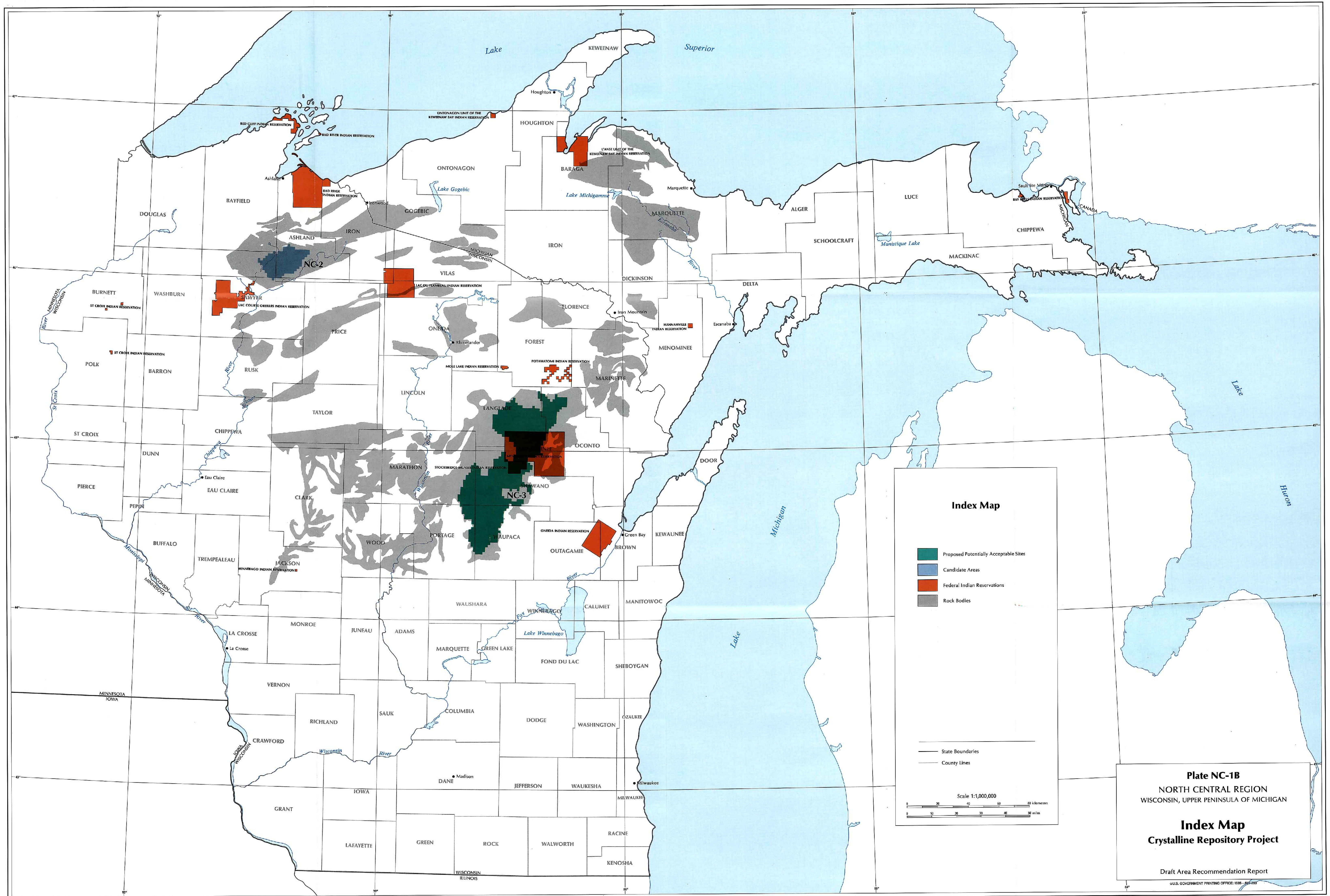


JOV.19981204.0005

This accession number contains the color images for the record with accession number: MOV.19981204.0005



Index Map

- Proposed Potentially Acceptable Sites
- Candidate Areas
- Federal Indian Reservations
- Rock Bodies

— State Boundaries
 - - - County Lines

Scale 1:1,000,000

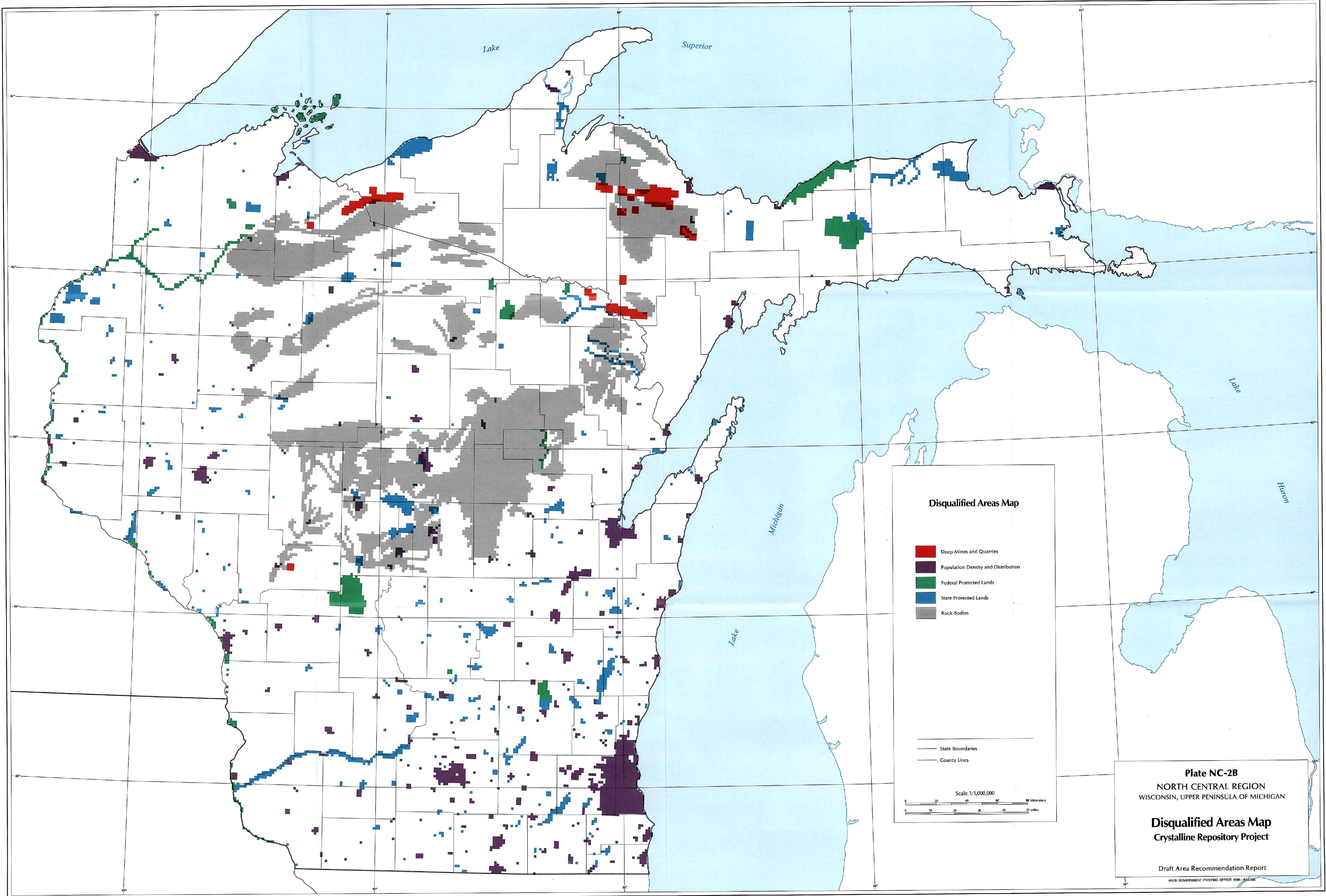
0 20 40 60 80 kilometers
 0 10 20 30 40 50 miles

Plate NC-1B
 NORTH CENTRAL REGION
 WISCONSIN, UPPER PENINSULA OF MICHIGAN

Index Map
 Crystalline Repository Project

Draft Area Recommendation Report

U.S. GOVERNMENT PRINTING OFFICE: 1986-345-285



Disqualified Areas Map

- Deep Mines and Quarries
- Population Density and Distribution
- Federal Protected Lands
- State Protected Lands
- Rock Bodies

— State Boundaries
— County Lines

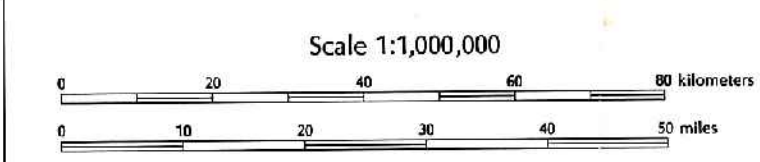
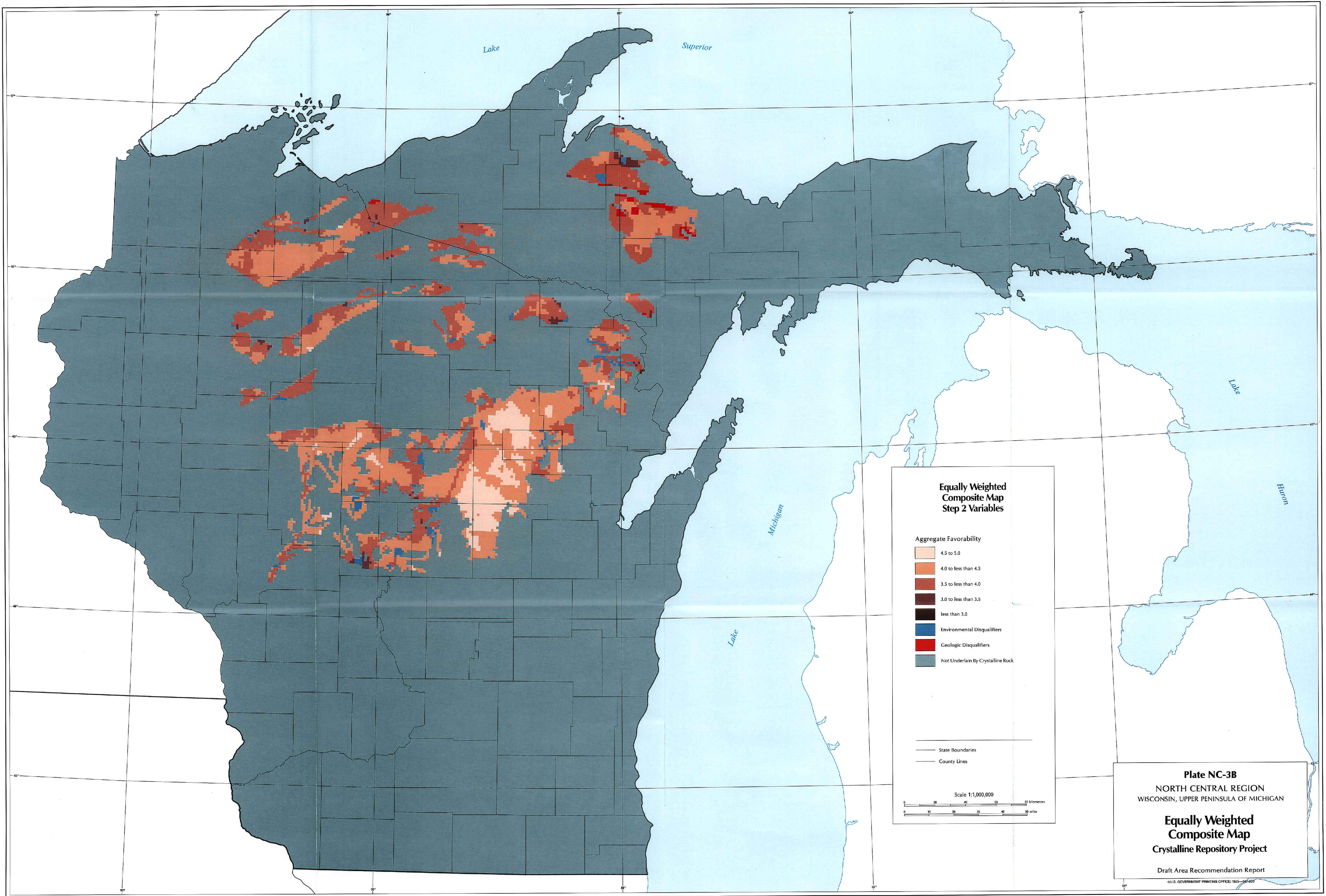


Plate NC-2B
NORTH CENTRAL REGION
WISCONSIN, UPPER PENINSULA OF MICHIGAN

Disqualified Areas Map
Crystalline Repository Project

Draft Area Recommendation Report

U.S. GOVERNMENT PRINTING OFFICE: 1988-517-286



**Equally Weighted
Composite Map
Step 2 Variables**

- Aggregate Favorability**
- 4.5 to 5.0
 - 4.0 to less than 4.5
 - 3.5 to less than 4.0
 - 3.0 to less than 3.5
 - less than 3.0
 - Environmental Disqualifiers
 - Geologic Disqualifiers
 - Not Underlain By Crystalline Rock

State Boundaries
County Lines

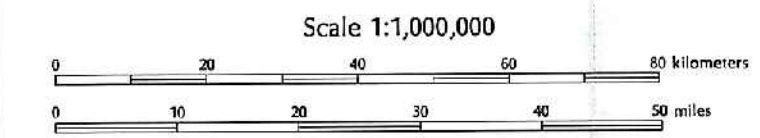


Plate NC-3B
NORTH CENTRAL REGION
WISCONSIN, UPPER PENINSULA OF MICHIGAN

**Equally Weighted
Composite Map**
Crystalline Repository Project

Draft Area Recommendation Report

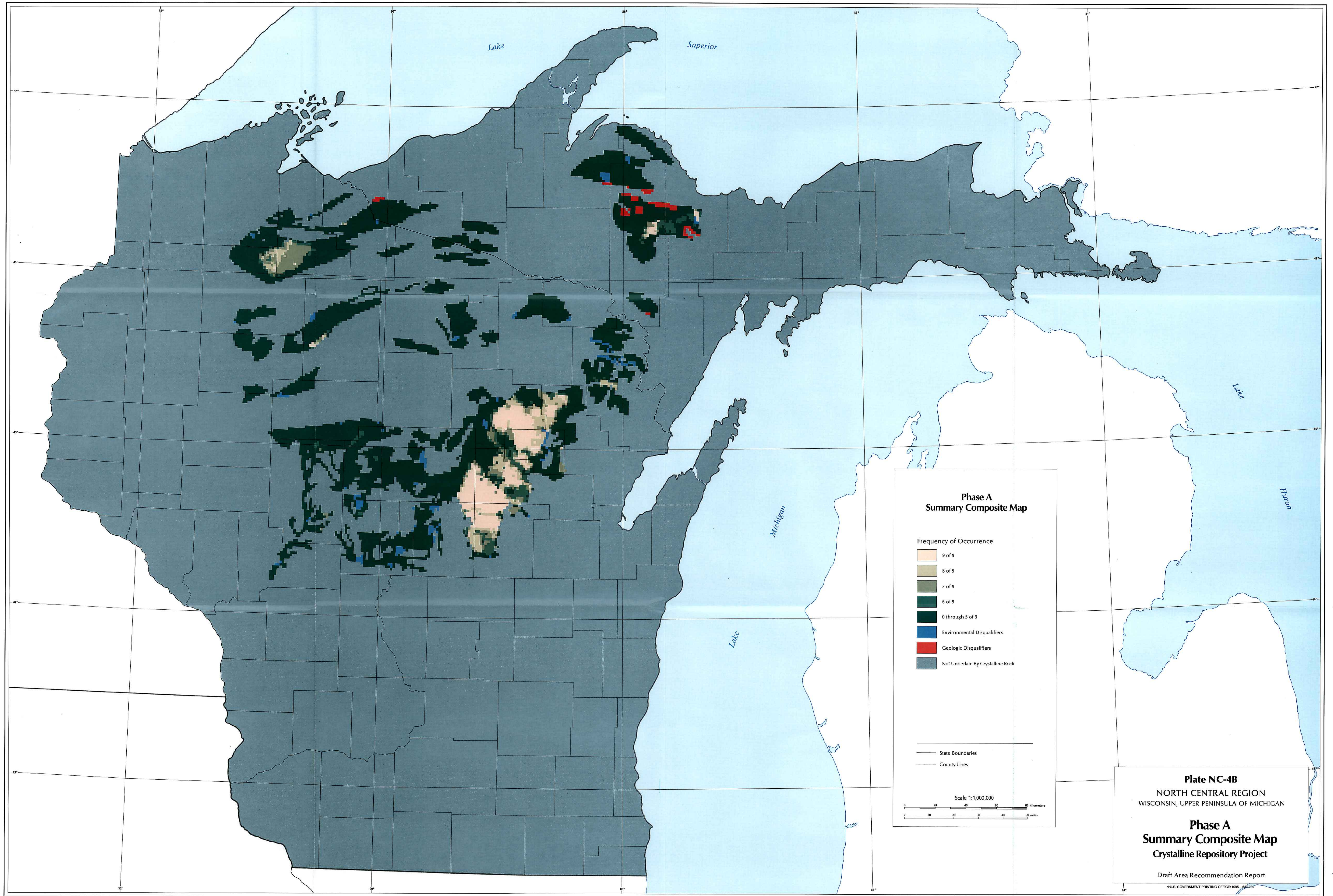
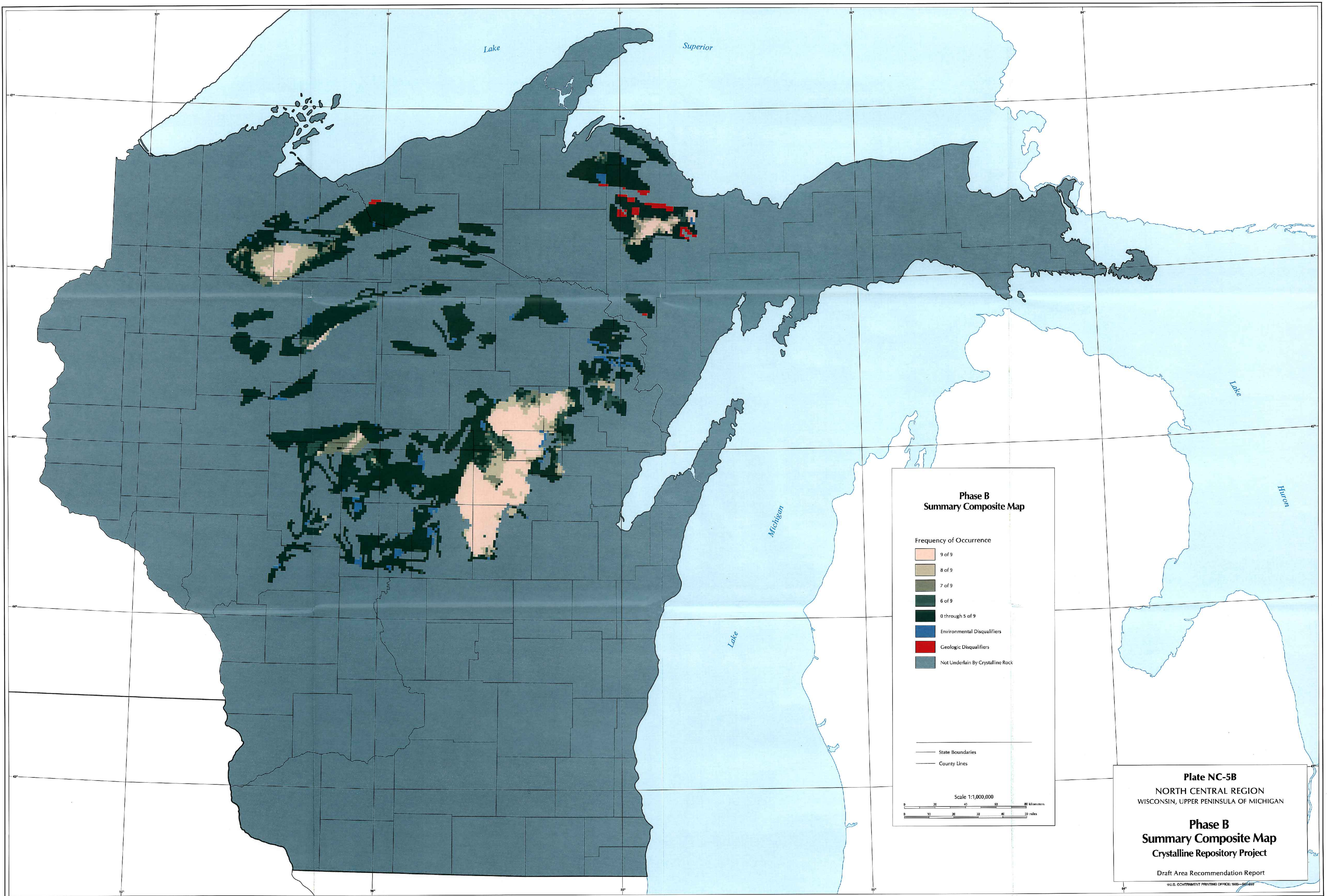


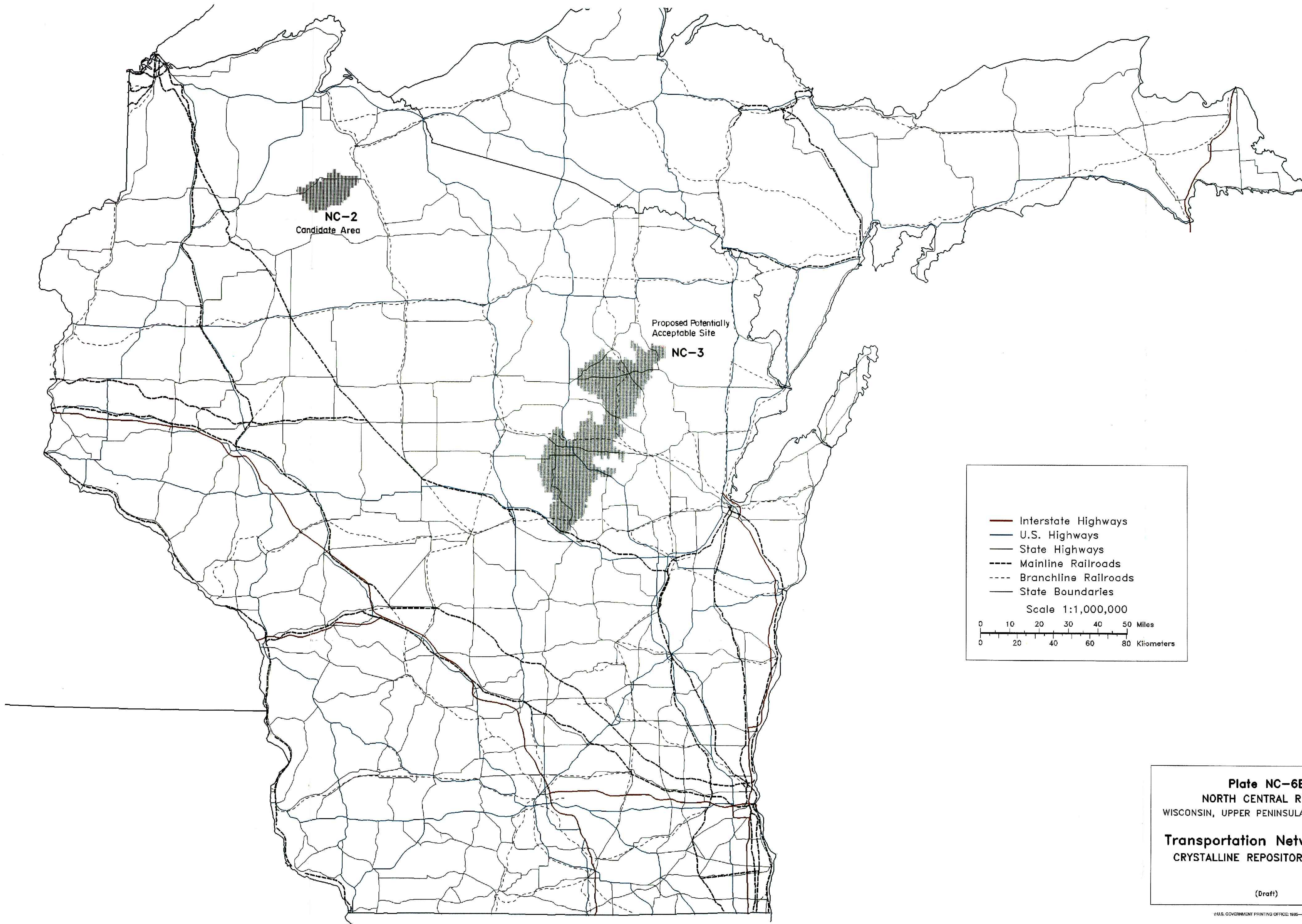
Plate NC-4B
 NORTH CENTRAL REGION
 WISCONSIN, UPPER PENINSULA OF MICHIGAN

Phase A
Summary Composite Map
 Crystalline Repository Project

Draft Area Recommendation Report

U.S. GOVERNMENT PRINTING OFFICE: 1988 - 546-230





NC-2
Candidate Area

Proposed Potentially
Acceptable Site
NC-3

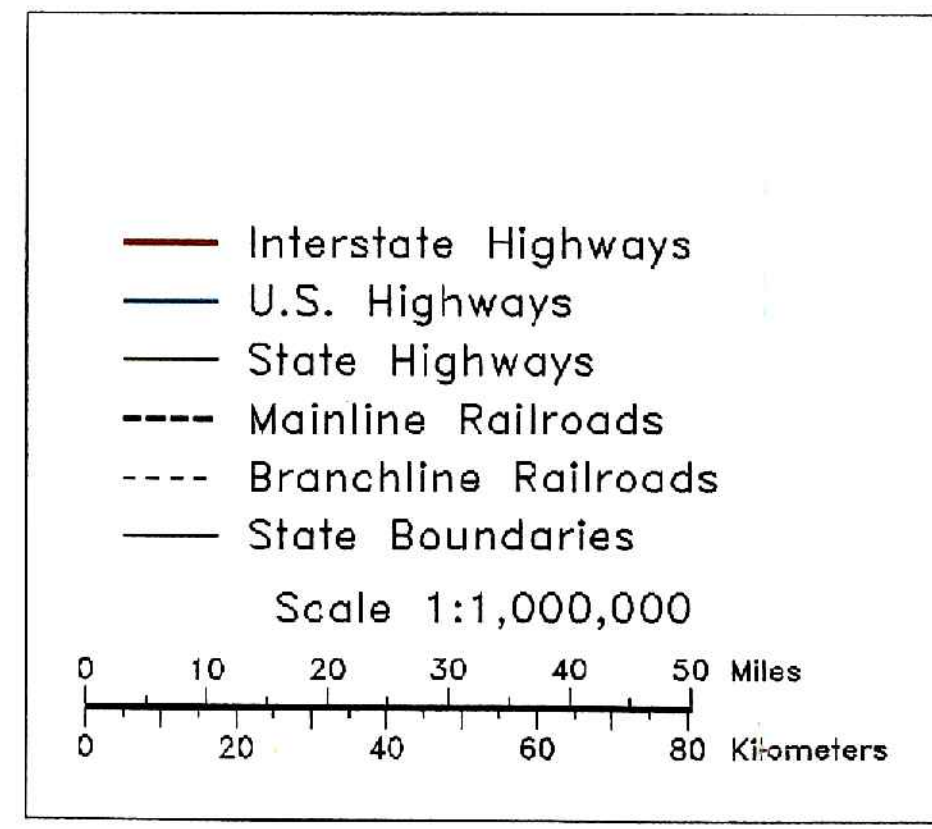


Plate NC-6B
NORTH CENTRAL REGION
WISCONSIN, UPPER PENINSULA OF MICHIGAN
Transportation Network Map
CRYSTALLINE REPOSITORY PROJECT

(Draft)