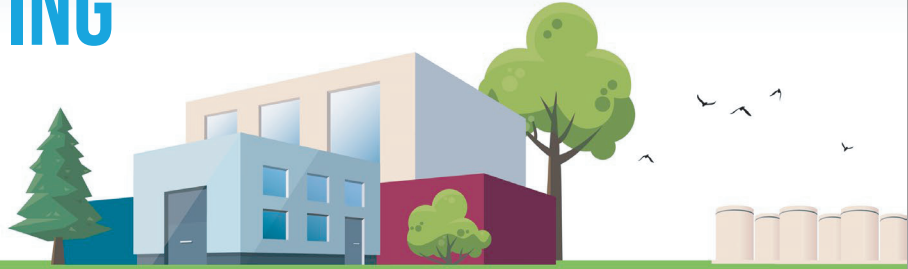


CONSENT-BASED SITING



? WHAT IS CONSENT-BASED SITING?

Consent-based siting is an approach that seeks the willing and informed consent of people and communities to host a project in their area. This process is designed to be flexible, adaptive, and responsive to community concerns.

HOW IS DOE USING CONSENT-BASED SITING?

The U.S. Department of Energy (DOE) is committed to using a consent-based process to site one or more federal consolidated interim storage facilities for spent nuclear fuel. Consolidating this storage provides several advantages, including reducing the number of locations in the United States where spent fuel is currently stored.

Consent-based siting processes evolve and are strengthened through ongoing engagement with communities, including Tribes, States, local governments, and other interested parties. DOE's consent-based siting process is community-driven to align with the goals of volunteer host communities. The approach enables meaningful and inclusive public participation, and centers equity and environmental justice as core values.

DOE recognizes that each community will have its own unique needs, concerns, and perspectives. Timelines and characteristics of a consent-based siting process may vary between communities.

HOW CAN PEOPLE AND COMMUNITIES PARTICIPATE?

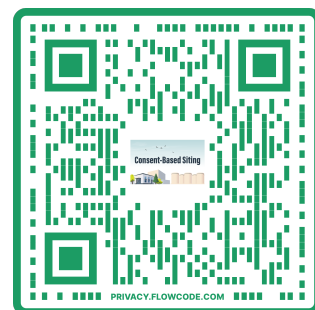
DOE is not yet soliciting volunteer communities to host federal consolidated interim storage facilities. The current focus is on building relationships with interested people and communities, establishing collaborative partnerships, and investing in mutual learning. In a later phase of the consent-based siting process, interested communities can volunteer to be considered as potential hosts.

Communities that volunteer to participate in the siting process will work with DOE through a series of stages. The stages are intended to serve as guidelines to help a community determine if and how hosting a facility is aligned with its goals. Interested communities have the flexibility to exit the process before moving to the next phase.

DOE strives to build mutual trust with each community interested in hosting a federal consolidated interim storage facility by working collaboratively through its consent-based siting process. The potential outcomes from the process are either a consent-based agreement, defined by the community in collaboration with DOE, or a determination that after exploring the option in good faith, the community is not interested in serving as a host. Both are successful outcomes.

DOE is committed to a consent-based siting approach that enables broad participation and centers equity and environmental justice.

Learn more by visiting energy.gov/consentbasedsiting



Scan QR code to learn more about consent-based siting.